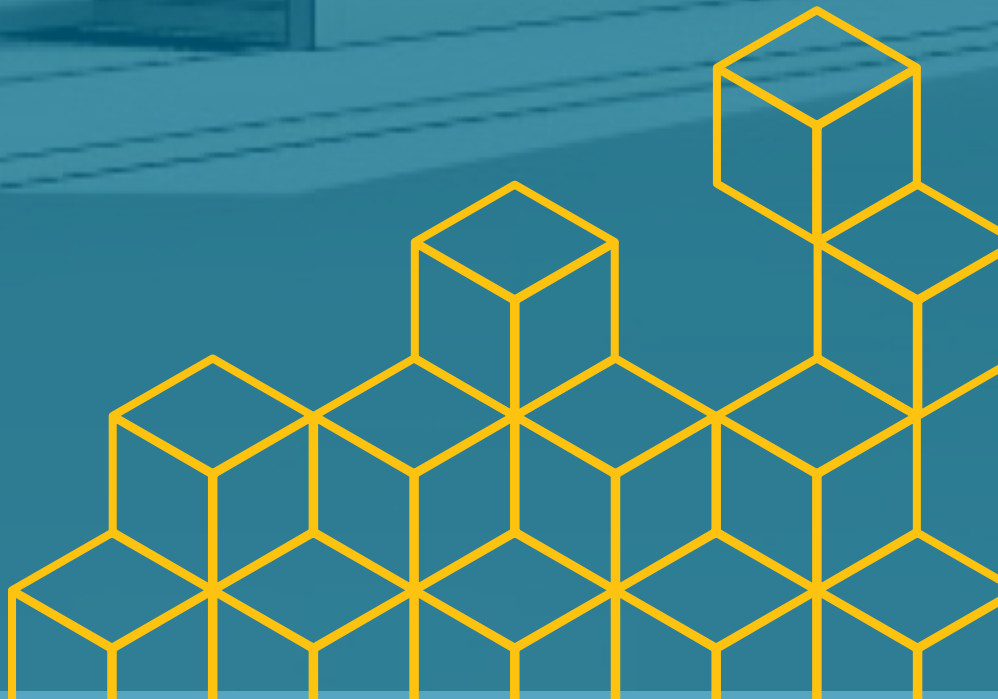




Connect

- Building Renewal 2024 -



Our Vision

New life in Christ, for our whole community.





Contents

4
Our History & Our Future

6
Minister's Letter

8
Why are we building?

10
What are we building?

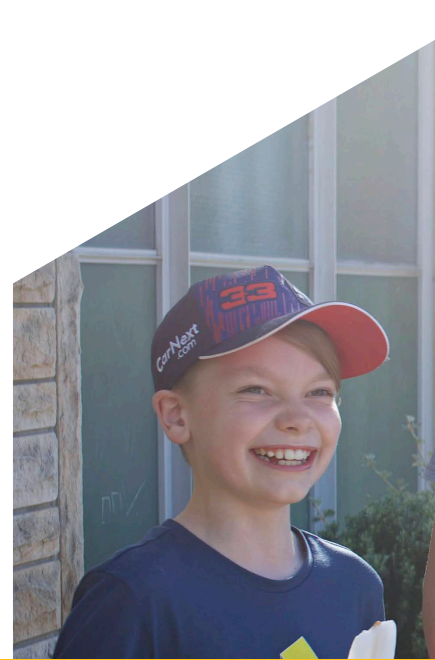
15
Before you give

17
Some FAQs

19
Who's worked on this?

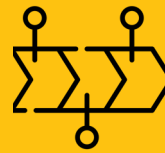
21
Floor Plans

Our History & Our Future



Early Years

- + 1890
First meeting of Anglican Christians at Lippett's farm, Clovelly.
- + 1893
Wooden 'mission hall' built at 69 Varna St (home of Clovelly Public School from 1897–1909).
- + 1920
Land at Arden and Varna Streets bought for £500.
- + 1923
Brick church building dedicated on Remembrance Day.
- + 1925
St Luke's becomes its own parish, after years of support from St Nic's, Coogee.
- + 1928
The Rectory is purchased in Arden St for £1300.
- + 1964
Current hall built to replace the dilapidated mission hall.



Recent Years

- + 2006
The hall kitchen was renovated thanks to a bequest.
- + 2008
A group of 17 start praying for a new work in Clovelly.
- + 2009
Luke's at Four launches as a new church for the east.
- + 2010
Dave Rogers appointed Rector of St Luke's.
- + 2011
Clomama playgroup launches.
- + 2014
New 9.15 gathering starts, after first Fun in the Park.
- + 2015
Fresh (Yrs 3-5) kids club begins & our fledgling youth group re-launches as Clovelly Youth (CY).



Momentum

- + 2018
Splash (K-2) kids club launched.
- + 2019
Regular Sunday attendance grows past 200 people, for the first time in decades.
- + Sep 2019 – Mar 2020
New church roof and repointing, with \$225,000 of donations.
- + 2021
6pm church launched to reach new kinds of people and the next generation.
- + 2022
Launch of our building renewal project, 'Connect'.
- + 2023
Development Application (DA) approved by Council.



Our Future

- + 2024
Connect project works to begin.

+ 2025

New building opens to reach more people with new life in Christ.

A letter from Dave



A once-in-a-generation opportunity to support the next stage in our vision.

I'm thrilled to put before you this once-in-a-generation opportunity to support the next stage in our vision: the Connect building project.

God has been building his church here since 1890, when St Nicolas' Coogee first planted an Anglican gathering at Lippett's farm in Boundary St. The latest chapter began in 2009, when a team of 17 adults and two children planted a new ministry at 4pm.

Since then, God has been graciously growing his church here: we replanted our morning church, started Clomama, added Fresh and Splash, have watched Clovelly Youth grow and flourish, and even launched a new 6pm gathering in a pandemic.

We've inherited our existing buildings from a previous generation, but their limitations are only becoming clearer as we grow.

Now imagine we had a proper foyer, where strangers feel at home and soon become friends and then part of God's family. Imagine an entrance that was warm and welcoming to our community and accessible for everyone. Imagine new, light and bright spaces for breakouts, youth groups, and community events. Imagine our buildings were connected together in a way that helped us love and serve people in the name of Jesus, rather than hold us back.

When we first brought this project to St Luke's in May 2022, we received 78 different pledges, from 101 adults and 17 children and teenagers. The total pledged was over \$1.36 million, which gave our Parish Council confidence to proceed to DA with Council. Our DA was approved in June 2023, a professional Project Manager 'Midson Group' appointed in August, and we are now negotiating with potential builders.

From small beginnings, we're blown away that over 200 people now call St Luke's home, by God's grace. But there are still tens of thousands within walking distance who are yet to experience the new life that Jesus offers. We believe this building renewal will help us connect many more people to Jesus for decades to come and help St Luke's to be a centre of community for our area.

This is a key moment. I urge you to be part of this exciting project by giving as generously as you can. Everyone's situation is different. Would you pray that God might surprise you with what you're able to give?

Jesus is at work today, bringing new life through his gospel and his church. Together, let's seize this opportunity to invest in the future and see new life in Christ for our whole community.

Warmly,
Dave.

Dave R.



Dave Rogers

Senior Minister

Why are we building?



TO CONNECT MORE PEOPLE TO JESUS

God has been growing his church but we're running out of space to welcome everyone we'd like. A new foyer will create a welcoming space for new people on Sunday, for guests at our Exploring courses, and for mums at Clomama. Plus, it will allow more seating in the church building. A new upstairs space will give Clovelly Youth room to grow and multiply, as well as for Community Groups to meet comfortably.



TO CONNECT OUR CHURCH TO THE COMMUNITY

We love welcoming people! But our entrances are dark and daunting, with no access for prams or wheelchairs. The main space for groups like Clomama is hidden away. We want to create a new, light and inviting entrance where the coffee and community are on display – a space to welcome people in and to share with our wider community.



TO CONNECT PEOPLE TO EACH OTHER

Life is better together – and we believe our new building will help foster community with one another. The new foyer and upstairs space will create ‘break out’ spaces for people to relax and connect and grow the friendships we all need. An accessible ramp will connect the church and hall to a common foyer, which gives time for conversations without being forced outside or parents worrying about children on the street.



TO CONNECT OUR BUILDINGS TO THE FUTURE

Our church has been part of the local community since 1890 – and we pray that St Luke’s is sharing new life in Christ with our community for another 130 years. But the hall is now 60 years old and, like much of the eastern suburbs, it needs a reno! This project respects the past but brings our buildings into the future with modern spaces that are safe and accessible for everyone.



What are we building?

We're connecting our church and hall with a new shared entrance and foyer, adding a first floor and repurposing the rooms at the back of the church.



A welcoming entrance

The ground floor

Our previous bishop once described our hall entrance as the ugliest building in his region. The current hall foyer is narrow and obstructs rather than invites. The main hall space is hidden from the street; the rusted fence and frosted glass windows are defensive rather than inviting.

This project will create one clear entrance into both the church and hall, with a glass-fronted welcome that is warm, light, transparent and inviting. It will make 'people flow' much better. An operable wall will allow multiple groups from our church and community to share this space.

Foyer & Kitchen

Any new building or church has a well-designed foyer space, something that we are desperately missing. The project will create a foyer with coffee cart, kitchen, and space for conversation that keeps children safe. During the week, it can function as a relaxed meeting space for coffee catch-ups, playgroup, or for our youth to meet.

Accessibility ramps

As well as an external ramp on the western side leading into the foyer, a connecting ramp will join the foyer directly into the church building. This will create a natural connection between the buildings, improve safety, and simplify provision of food in the church as well as accessibility to toilets.

Rooms re-imagined

The current coffee bench will become a cry room where parents can feel part of the church gathering, with direct visibility to the church via sound-proof glass. The existing parents room will continue as an additional cry room, as well as a meeting room mid-week. The current crèche will become a small staff office.

A new & contemporary meeting space

The first floor

This project gives us a new medium-sized meeting space of benefit to mid-week adult groups as well as another space for Kids Church and Clovelly Youth. The open space over the stairs ensures this will be light and bright, unlike many of our other spaces.



Lift

As well as stairs, a lift to the basement and the first floor will provide accessibility for everyone. And it will make catering simpler to all parts of the building.

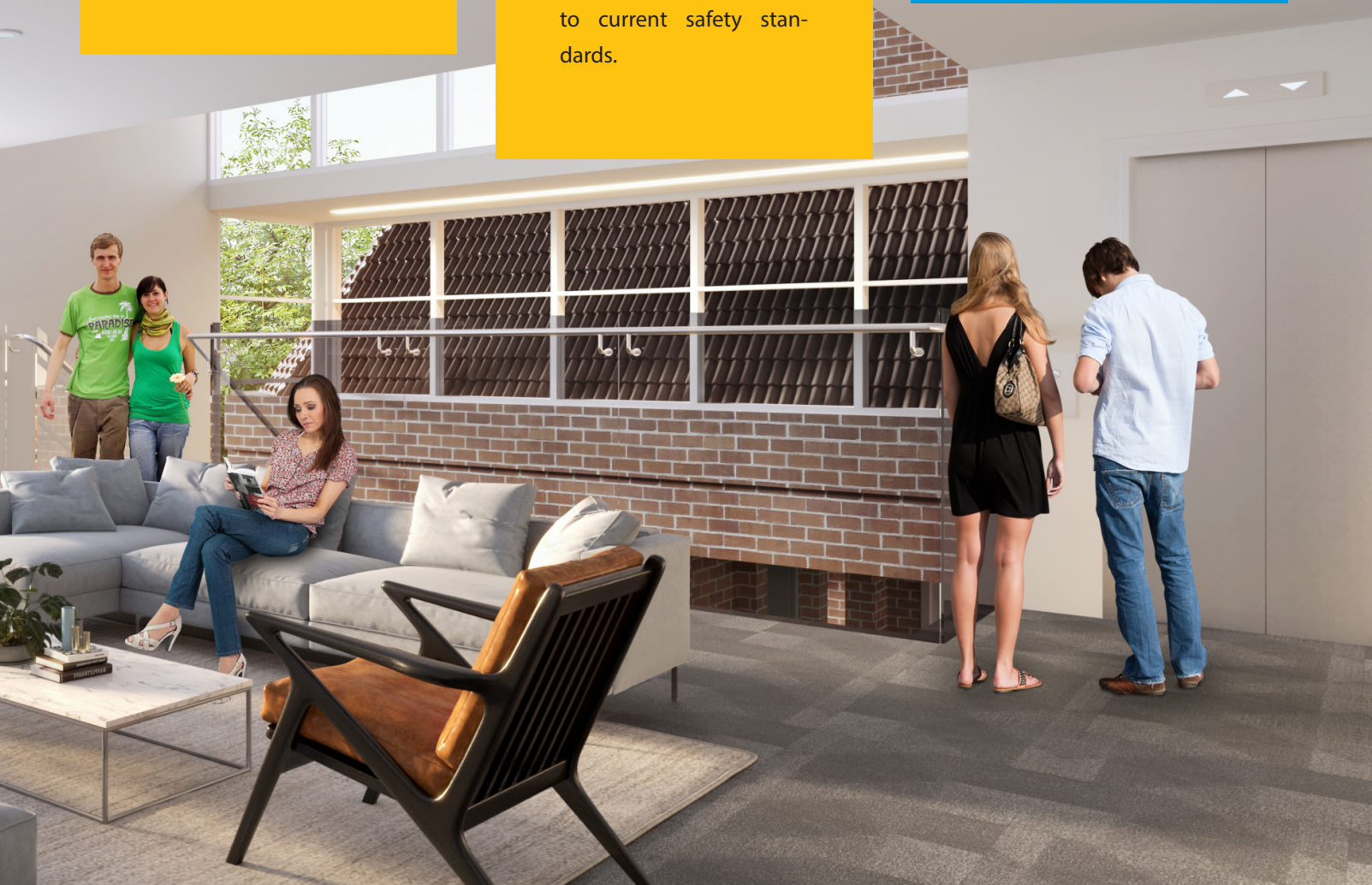
Toilets and services

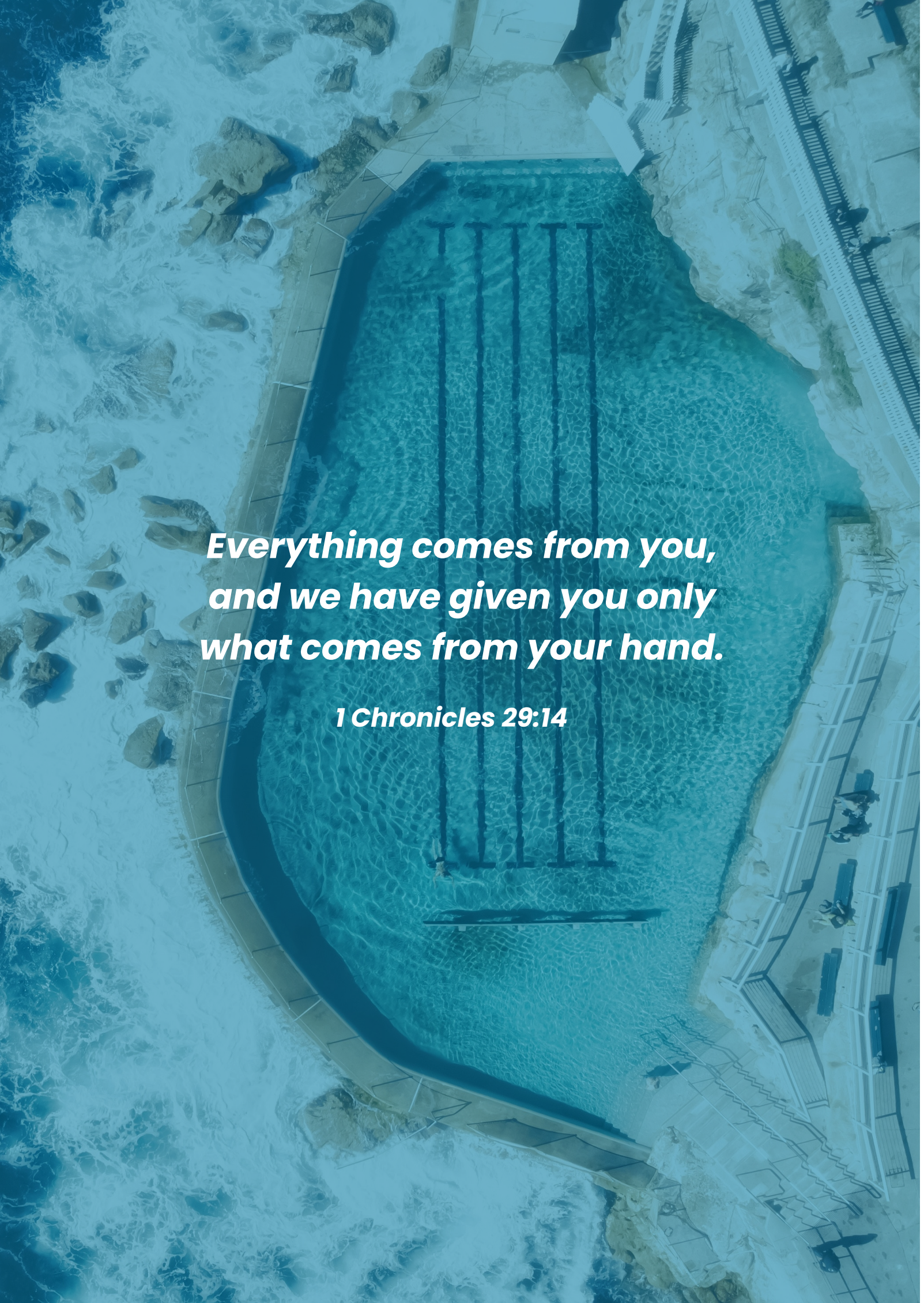
We'll have three new toilets on the first floor including an accessible bathroom. We'll also be upgrading our fire and electrical services to current safety standards.

Lower Ground

Church basement

We'll maintain access to this existing space underneath the church via stairs and a lift.



An aerial photograph of a swimming pool with a rocky coastline and ocean waves. The pool is rectangular with a dark blue interior and is surrounded by a concrete deck. The ocean waves are white and foamy, crashing against the rocks. The sky is a clear, light blue. The text is overlaid on the pool area.

***Everything comes from you,
and we have given you only
what comes from your hand.***

1 Chronicles 29:14

Before you give

Our prayer is bigger than a building, and greater than writing down a number. Our deepest prayer is that God would grow in our hearts a deeper love for Jesus and for all those in our city who need Him.



1 // PRAY

Before you do anything else, please pray. This is a God-sized vision that can only be accomplished by God's grace through persistent prayer.

Thank God for his incredible provision already and pray for what part you might play in contributing to this vision. Ask God to help you be generous. Make time to pray with the people in your life.



2 // DISCUSS

Set aside time to have conversations with others. Talk about it with a trusted friend, your spouse if married, with older children, or with a financial advisor.

You may need to plan how you'll give your tax refund, postpone a holiday, move funds, or reduce living costs.



3 // ASSESS

Look at what God has given you and ask what would be generous and sacrificial for you.

As you consider making a pledge, keep in mind that this gift is over and above the regular giving that our church depends on.

Please also consider how to maximise your pledge through tax deductibility. If you're considering a gift of \$10K, could you give a larger amount if you take into account a likely tax refund?



4 // DECIDE

Decide on your figure and make your pledge online.

Encourage others to come with you, as we both celebrate God's generosity to us and commit ourselves to connecting more people with the new life Jesus offers.

**Make your pledge online at
clovelly.org.au/building**



FAQs: The Project

What's the cost of this project?

We are now expecting the costs to be in excess of \$2.3m, but this will ultimately depend on the tenders received from potential builders and the negotiations that follow. We expect to bring an update by Easter.

It seems like a lot of money. Do we need to spend that much?

In a way we'd love to spend more and do more - and in fact, we've already scaled back our original plans. To maximise the potential of our buildings, we need to connect the church and hall - that requires a ramp to solve accessibility issues, fire separation to satisfy building codes, and both stairs and a lift to the other floors. This is a design already honed and refined over years; anything less and we'll leave a compromised building for the next generation.

Do we need to raise the full amount before the work begins?

Yes. We need the full amount in the bank for the building contract to be signed by the Anglican Church Property Trust. We are currently negotiating with potential builders and will keep you updated about the costs.

Why doesn't the Anglican Church (or Diocese) pay for this?

The Sydney 'Diocese' is the network of all the Anglican churches across Sydney. While the central office provides assistance with insurance and risk, each local church has its own needs, budget and initiatives to pursue the mission of Jesus in its area. Ultimately, we are the Anglican church in our area and this project is our responsibility. It's the generosity of past Christians that allows us to enjoy these buildings (for free!). Now it's our turn to invest in them for the sake of this generation and the next.

Isn't sharing Jesus, or employing more staff, or giving to the poor, a better use of money?

When God saves people, he gathers us into a church family. We need good spaces that work for us to gather to praise God, be taught from God's word, build community, and welcome newcomers. The pandemic has shown us how the gospel can flourish without buildings and yet it's also shown us how much we need spaces to meet, larger than just the lounge rooms of the eastern suburbs.

Each year, we at St Luke's give away 10% of all that's given, both to the needy and spiritual needy - in recent years that has been around \$50,000. As we've grown, our ability to be generous to others has grown, but our buildings are now impeding the growth of God's church in this place and we'd love to change that. We want to keep growing our staff team and to grow our generosity to the poor, but now's the time to invest in our buildings so that our buildings serve people and grow the ministry of the gospel.

When is construction likely to begin and when would we move in?

We anticipate that, God willing, the project will begin in May 2024. Our Project Manager estimates that the build is approximately 12 months.

FAQs: Your Gift

Will my donation be tax deductible?

Yes. We already have a tax-deductible facility through the National Trust for items of preservation and restoration on the church building.

Is this on top of my regular giving?

Yes. The day-to-day running of St Luke's depends on our regular giving. Giving to this project is a one-off, once-in-a-generation, commitment above your regular financial support of God's work here. If not already, please start giving regularly first and give to this building project second.

Who will see my pledge?

Like our regular giving, only the Treasurer (Dr. Simon Gerber) and Senior Minister (Rev. Dave Rogers) will manage pledges and financial gifts.

I don't earn much. Will my gift make a difference?

Every contribution will get us closer to the target. More than that, we'd love everyone who calls St Luke's 'home' to find some way to contribute and to be part of this moment under God. Our prayer is not for equal amounts, but for equal sacrifice; \$1000 is a stretch for some, while \$50K wouldn't be a sacrifice for others. So please pray, reflect, talk, ask questions, and make your pledge trusting God.

Got more questions !?

We'd love to hear them. It's through asking lots of good questions that we've been able to arrive at this point. If we haven't answered your question, please ask via clovelly.org.au/building



Who's worked on this?



Dave Rogers
(Senior Minister)

Dave is the Senior Minister of St Luke's, married to Mera with three kids. Dave has been dreaming of this project since starting at St Luke's in 2009.



Scott Groves
(Warden + Building Committee)

Scott is married to Sharon, with two teenage boys now also serving and leading at St Luke's. Scott has 20 years experience in the construction industry and currently works with Multiplex building skyscrapers.



Joel Lidden
(Building Committee)

Joel and Bec have been part of 4pm church for over a decade. Joel is a Project Director for the NSW Government working in School Infrastructure NSW.



Angela Brickell
(Building Committee)

Angela and her family have been part of St Luke's since 2013. Angela works as Senior Legal Counsel for Mirvac, bringing invaluable legal expertise in the construction industry.



Chris Bellenger
(Warden + Building Committee)

Chris and Jan belong to our 10am church and lead one of our Community Groups. As a University Professor, Chris has been involved in design and construction of new faculty buildings, and student accommodation buildings.



Simon Gerber
(Warden + Treasurer + Finance Committee)

Simon and Giselle have been at St Luke's since 2009. They've served as Community Group leaders and Simon has been both Warden and Treasurer for a decade. Simon works as a GP in Bondi Junction.



Paul Brickell
(Finance Committee)

Paul is married to Angela with two kids. Trained in law and applied finance, Paul now works as Executive Director of Loans Syndication at ANZ.



Michael Jothy
(Finance Committee)

Michael and Ruth have two kids and have been part of St Luke's since 2019. Michael has extensive experience as a Chief Financial Officer and currently works at Toll Global Express.



Andy Jamieson
(Finance Committee)

Andy and Annemarie were part of the team that planted 4pm church in 2009. Andy is Founder and CEO of insurtech Advizr and brings vision and energy to this project.

Design Advisory Group:

The working design has received input at various points from a Design Advisory group comprised of: Alana Koch, Fiona Smartt, Larissa Taylor, Mark Taylor, Alicia Wells.

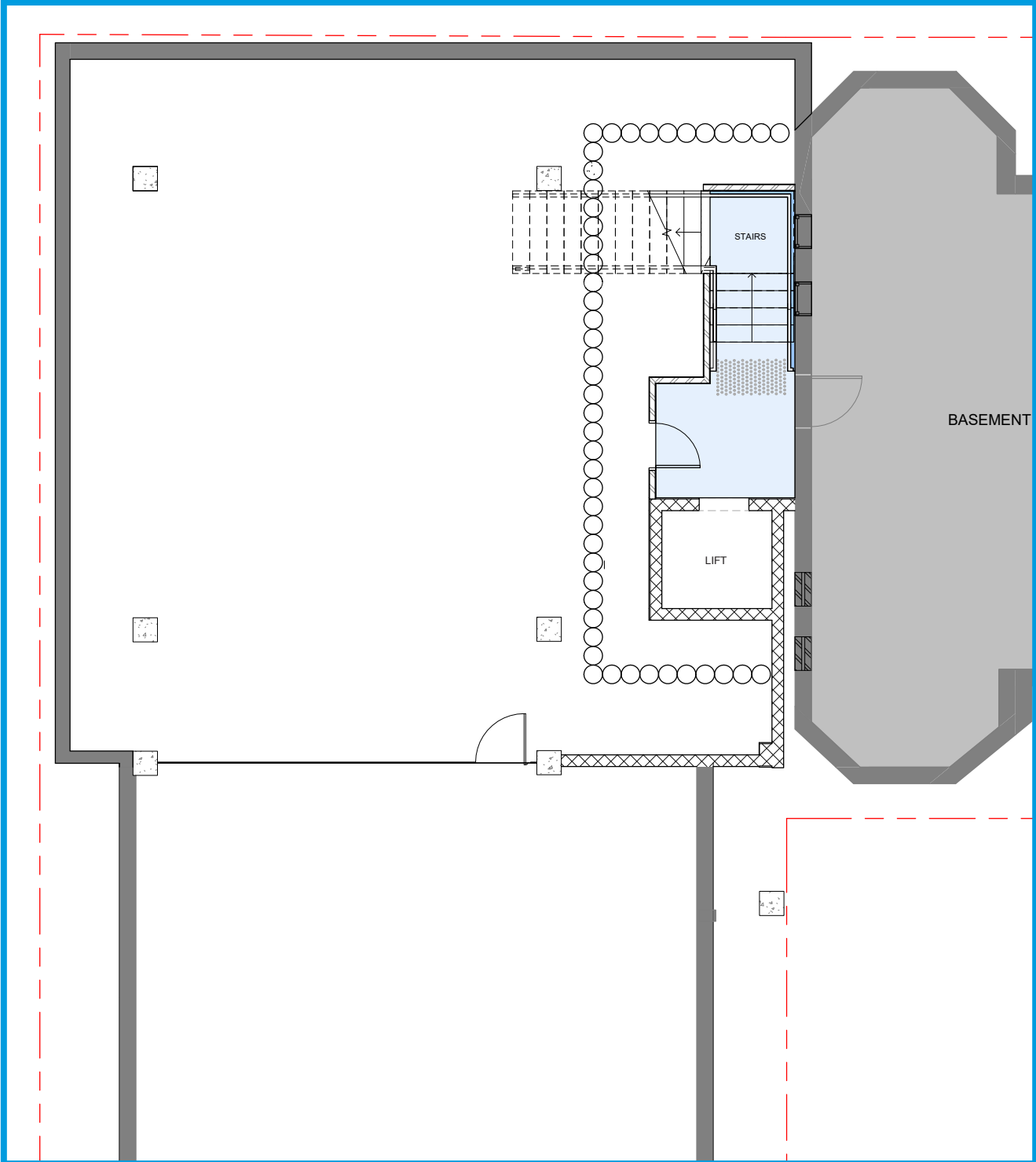
Our Architects:

MCA
architects



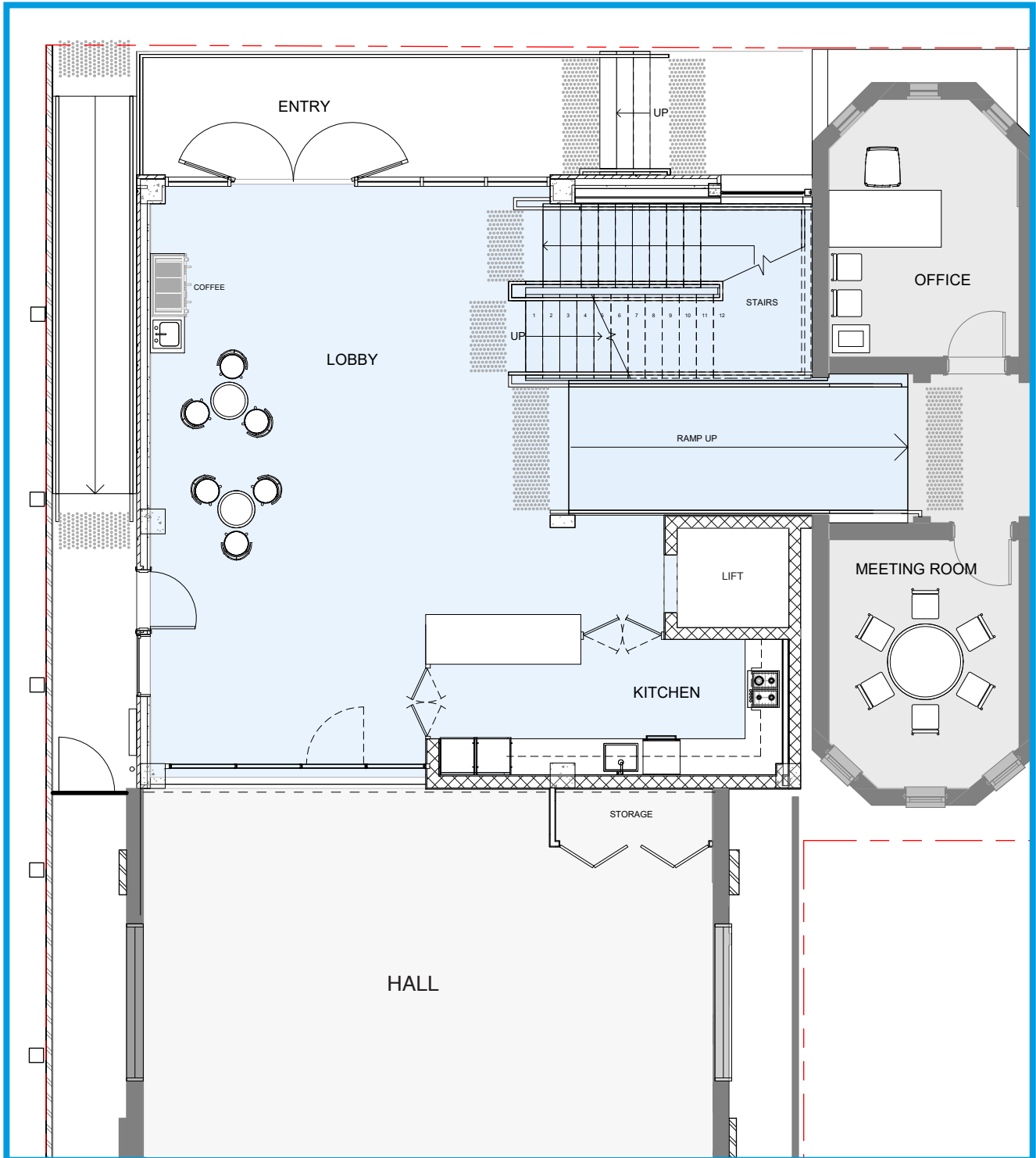
Floor Plans

The Basement:



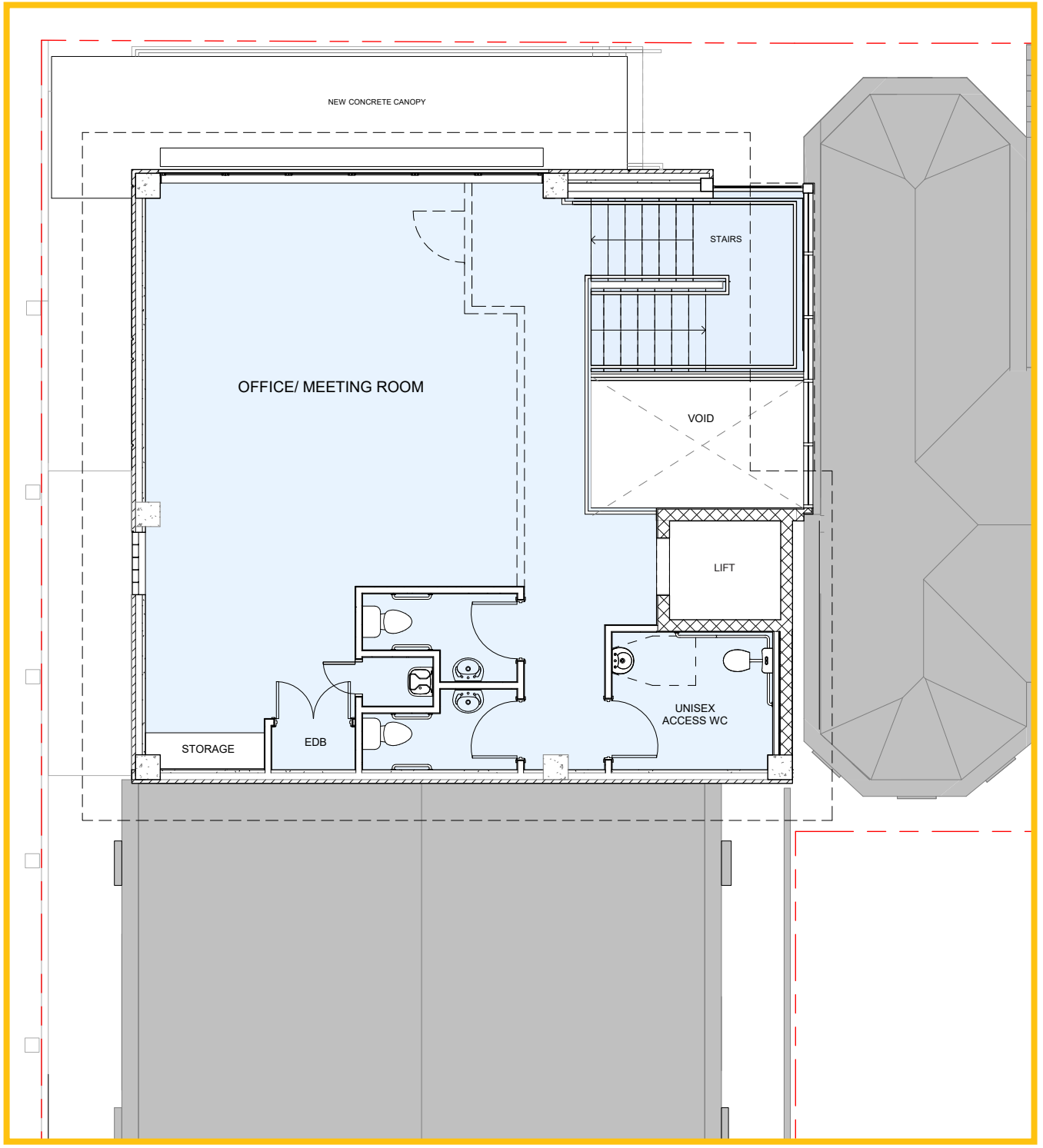
Floor Plans

The Ground Floor:



Floor Plans

The First Floor:



Follow our progress:

clovelly.org.au/building



ST LUKES
ANGELICAN CHURCH
— CLOVELLY —